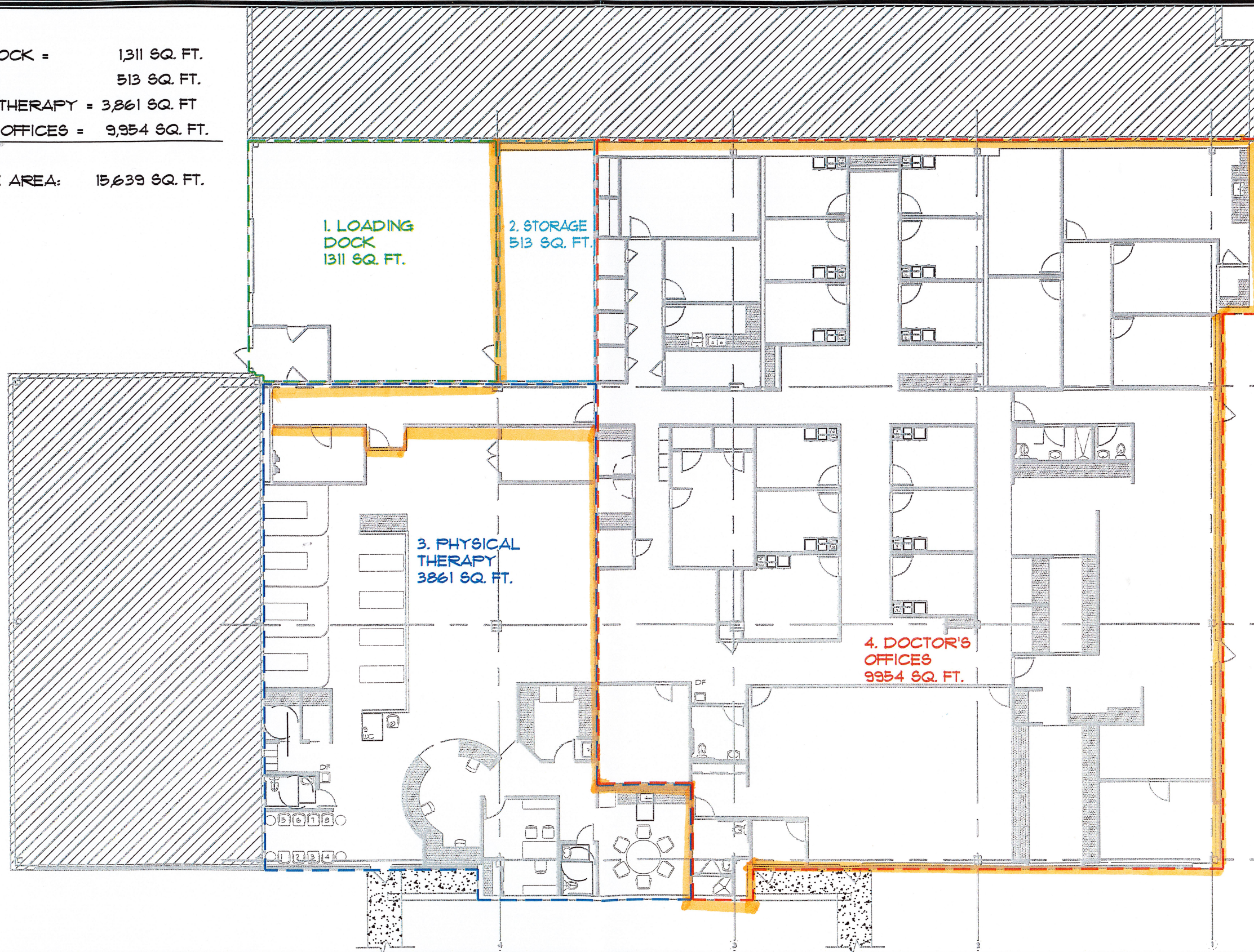


- 1. LOADING DOCK = 1,311 SQ. FT.
- 2. STORAGE = 513 SQ. FT.
- 3. PHYSICAL THERAPY = 3,861 SQ. FT.
- 4. DOCTOR'S OFFICES = 9,954 SQ. FT.

TOTAL LEASE AREA: 15,639 SQ. FT.



DYAMI Architecture PC
 80 Red Schoolhouse Road, Suite 105
 Chestnut Ridge, NY 10977
 P (845) 426.5300
 F (845) 426.5310

PROJECT:

**ADVANCED ORTHOPEDICS &
 SPORTS MEDICINE**
 400 AIRPORT EXECUTIVE PARK
 NANUET, NY

DRAWING TITLE:

**FLOOR PLAN
 LEASE AREAS**

REVISED:

DRAWING NO.

SK-1

FILE NAME:

SCALE:
1"=20'-0"

DATE:
05.13.11

PROJECT NO:
1053